

EV CHARGER PEDESTAL SUPPLY PIT

SUPPLY PIT FOR WALLBOX EV CHARGER PEDESTAL INSTALLATION

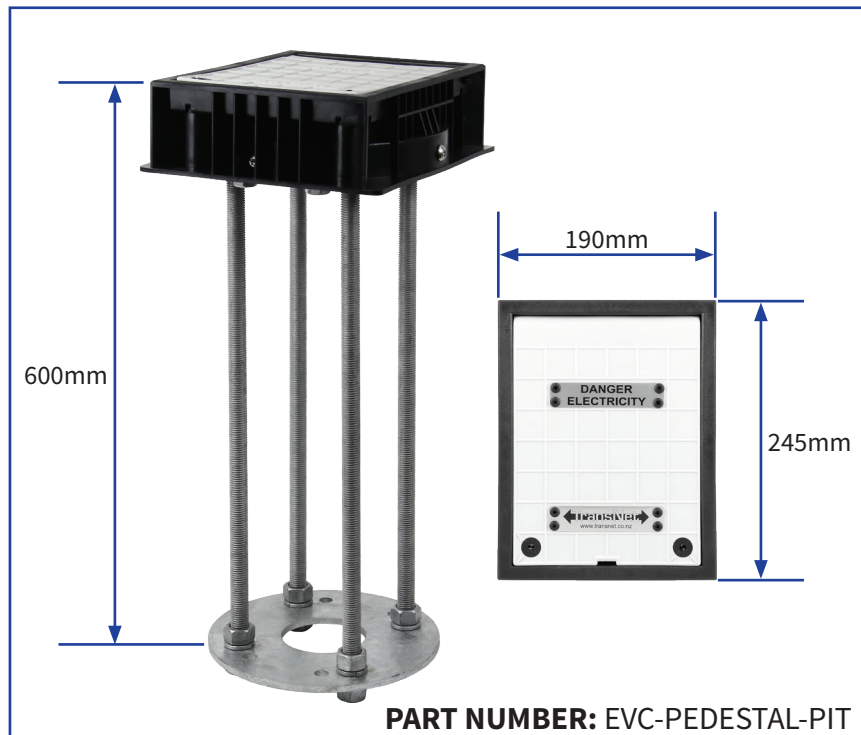
One thing to seriously consider when undertaking a green-fields development is whether EV charging infrastructure is going to be required now or in the future. When laying carpark and footpath pavement, having made allowance for future installations is a must.

Including EVC-PEDESTAL-PITs during planning will mean in the future an electrician can simply run cable in the existing duct and terminate to a pedestal that bolts into place without additional preparation work saving precious time, money and more important to some - the need to open and reinstate pavement already in place.

EVC-PEDESTAL-PIT is essentially a pre-installed base for a pedestal to fasten to as well as a placeholder and duct termination point.

A draw wire in the duct allows for cable to be pulled at a later date. This option gives the flexibility to quickly and easily install EV charging infrastructure without a costly retrofit.

The pit is safe for pedestrians to walk on without risk of injury. It has been tested to comply with BS5834 part2 (pavement loading), and is secure with access using security key.



This pedestal supply pit can sit idle until you decide it's time for EV infrastructure to be installed. Then follow the five simple steps to get the job done!



Installation of Pedestal supply pits for future use

APPLICATIONS

- Public/Council carparks
- Commercial properties
- Retail precincts
- Apartment Blocks

FEATURES

- Allows for future installations without messy reinstatement of pavements
- Fast and easy for electrician to install and terminate pedestal and chargers
- Safe for pedestrians while not in use
- Lockable lid for security
- Easily reinstated lid if moving - take your chargers and pedestals with you

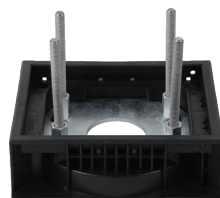
DIMENSIONS

- Ground Level Lid: 190x245mm
- Frame: 600mm deep

KITSET COMPONENTS

- Bottom plate
- 4 x 600mm threaded rod, spring washers and nuts
- Top plate with threaded nuts for pedestal fixing
- Plastic enclosure and lid
- Levelling nuts and studs for pedestal installation

HOW TO GO FROM A PLACEHOLDER TO A WORKING PEDESTAL



Remove lid – Install studs – Drill lid and replace – Fit pedestal – Wire up (electrician required) and install pedestal covers.